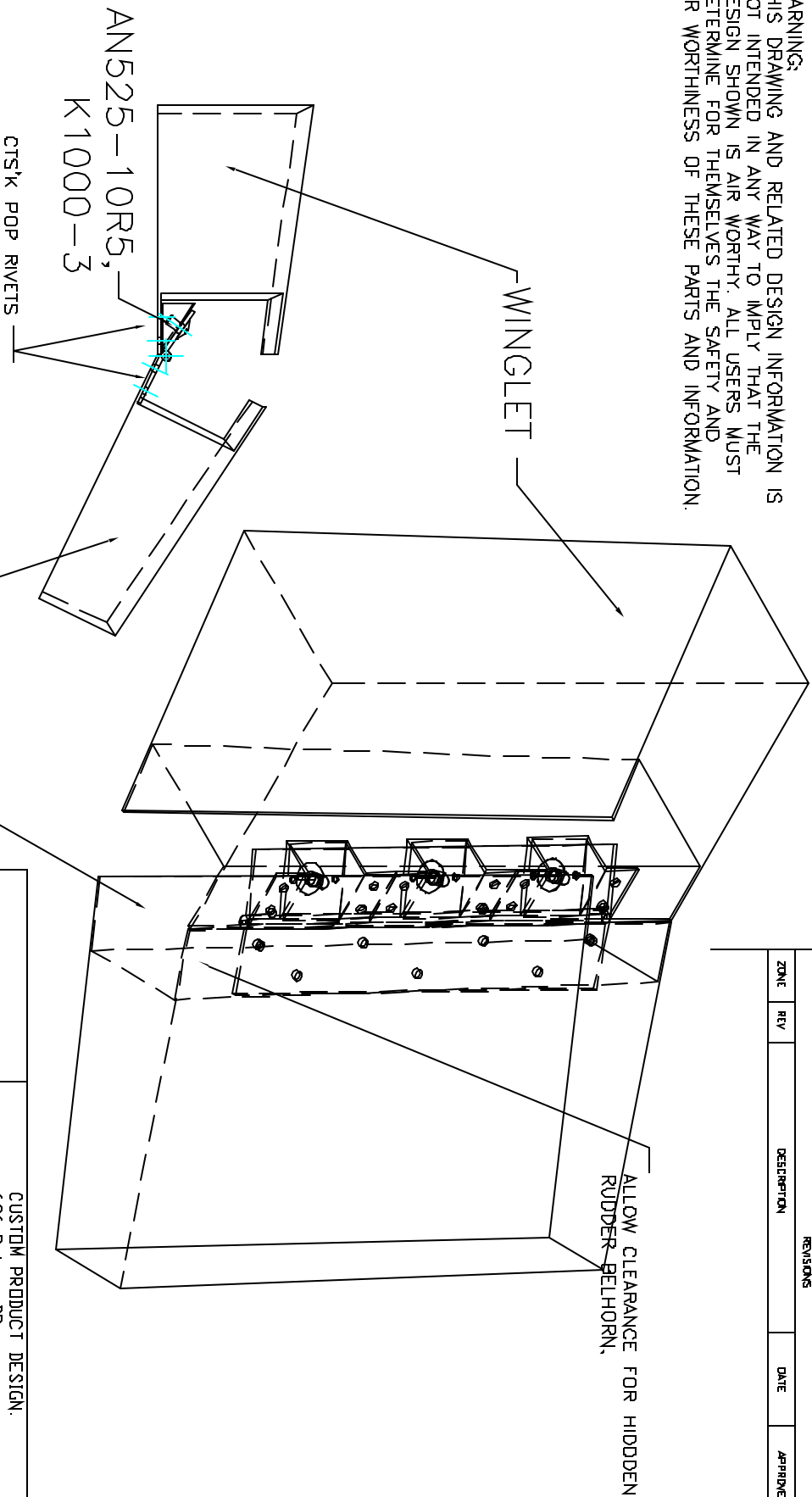


WARNING:
THIS DRAWING AND RELATED DESIGN INFORMATION IS NOT INTENDED IN ANY WAY TO IMPLY THAT THE DESIGN SHOWN IS AIR WORTHY. ALL USERS MUST DETERMINE FOR THEMSELVES THE SAFETY AND AIR WORTHINESS OF THESE PARTS AND INFORMATION.



REVISIONS			
ZONE	REV	DESCRIPTION	DATE

CUSTOM PRODUCT DESIGN: 686 Peizer DR. Mt Pleasant SC 29464			
RUDDER HINGE ASSY.			
SIZE	FROM NO.	DATE NO.	REV
SCALE			SHEET

ONE LAYER OF BID WITH FLOX CORNERS OVER ALL THREE HINGE BRACKETS LAPPING ON FRONT SIDE AND ENDS 1".
COAT HINGE WITH WAX AND SCREW TO BRACKETS DURING CURE.