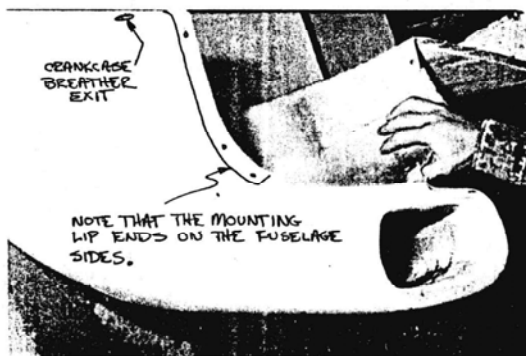
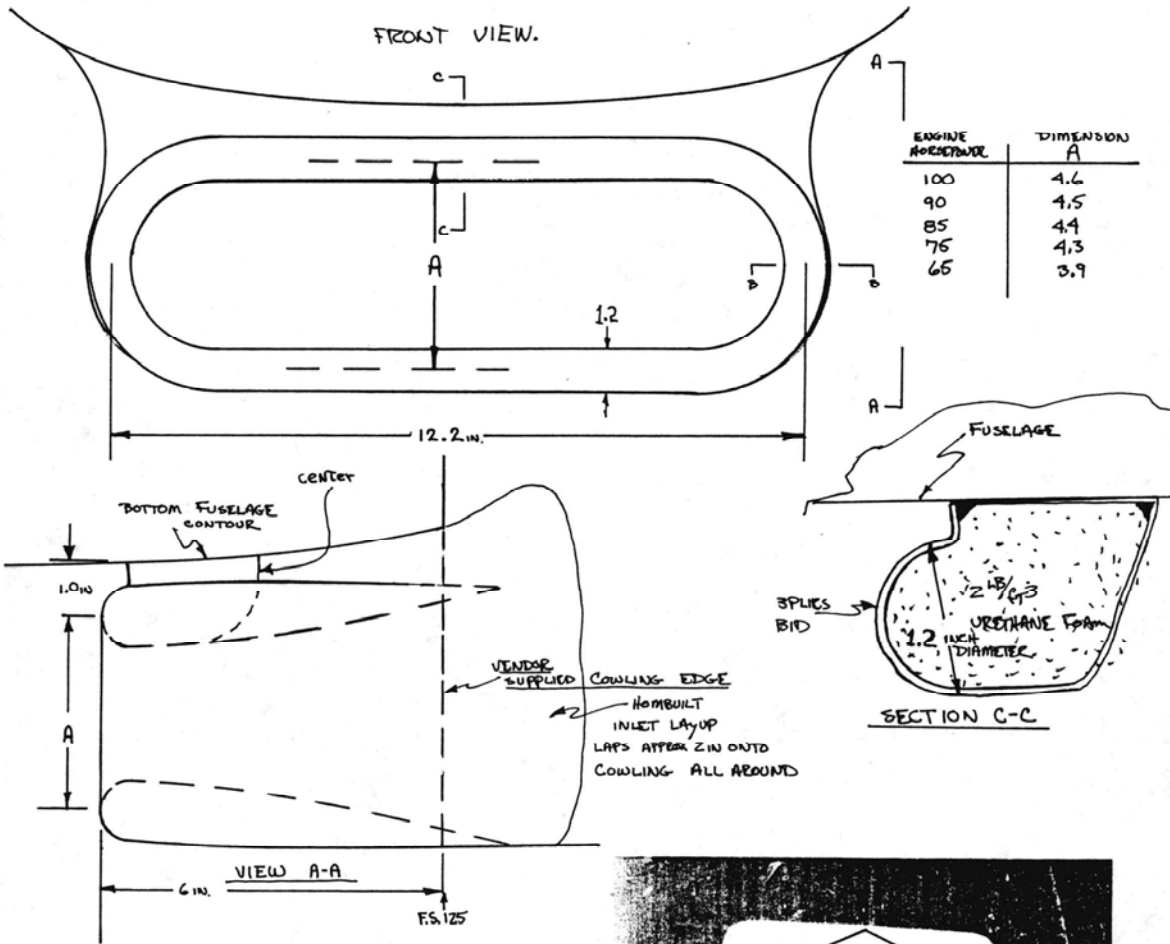
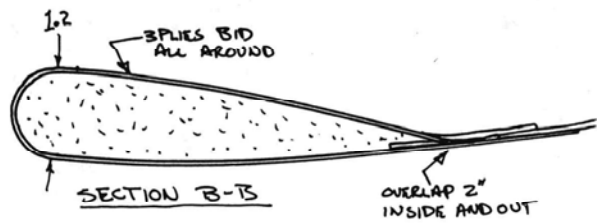


Inlet Lip

The cowl as supplied has no inlet lip for two reasons: (1) the various engine sizes (65 hp to 100 hp) require different inlet areas, (2) a homebuilt lip results in a lower cost cowl.

To make the inlet up, cut urethane foam strips as shown and glue in position with 5MIN or RAEP. Shape the lip as shown for your type engine. Sand the whole area as shown and lay up ~~three~~ plies BID over the foam lapping onto the cowl inside and outside.



DETAIL PHOTOS OF THE PROTOTYPE COWLING INLET ON N4EZ

